



A good quality lock is an essential part of the ground anchor / chain / lock combination.
Appx £55.

These may appear expensive, but when your bike, or ATV and the like, at well over a thousand pounds is at stake, spending money on securing it is essential.
(there are cheaper versions but generally they offer less resistance to cutting / forcing the lock or chain)

Property marking

Property marking- It is good practise to take photos of items of equipment that are of value and make note of serial / chassis numbers and the like.

For small garden tools it may be a case of simply spray painting them a gaudy colour making them less attractive to a thief, but still perfectly functional.

For ATV's Mowers and some bikes consider etching an identifiable mark onto the frame like your postcode for example. There are several companies that make engraving kits specifically for this purpose.

Smart Water and Select DNA both use technology to mark property with a unique code. you then register the property with them with the code from the product.

Consider registering the property on a Secured By Design approved property register. Property that has been registered on these sites have a much greater chance of being returned to the owner if recovered as they are used by most Police Forces in England and Wales.

Signage

Consider fitting signage to the exterior of the shed (and other prominent places around the property boundary) warning of security products being used. There are many available on the internet to print off for free and laminate keeping costs to a minimum.



SHED SECURITY PRODUCTS

Durham Constabulary does not endorse any products. All research into the product is the responsibility of the individual concerned. However were possible products used should be endorsed by Secured by Design
<https://www.securedbydesign.com/>
or sold secure

<https://www.soldsecure.com/>

All their products are tested and when passed are approved by every Police force in England and Wales and insurance companies alike.

If you need to contact the Crime Prevention Department please use crimepreventionofficers@durham.police.uk we will respond as soon as we can to your query.



SHED SECURITY PRODUCTS

General Recommendations & Advice



People don't often secure their shed or garage in the same way they do their homes. People often end up using a flimsy lock or padlock to protect the contents. Burglars know sheds are a weak point when it comes to security and often see them as easy targets.

Most common items stolen from your shed:

- Bikes
- Mowers
- Garden tools
- Power tools

Shed security

- Make sure that your shed door, door frame and walls are solid.
- Replace any damaged or rotten areas with new sections.
- Try to place the shed door facing your house and not too close to a perimeter wall or gate.
- Consider keeping valuable items in a strong lockable box or cage.
- Fit two closed shackle padlocks on strong padlock hasps - one a third of the way up from the bottom of the door and one a third of the way down from the top of the door.
- Fit wire mesh or bars on the inside of your window frames.
- Wrap a strong chain around and through the handles of garden tools, lawn mowers, cycles etc and secure the chain to the wall using a padlock or a ground anchor fixed to the base of the shed.
- Consider integrating your shed into your home alarm system, especially if you have valuable items in it. Use door contact sensors and check your glass is secure before installing break glass sensors.
- Illuminate the area around your shed using dusk till dawn lighting.

Lighting

Thieves do not want to be seen as there is more chance of being caught if they are. Good quality lighting either dusk to dawn or security type are good ways of lighting the area around the shed / garage.



Hard wired dusk to dawn light
Appx £25



Solar powered dusk to dawn light (for where there is no power option)
Appx £20



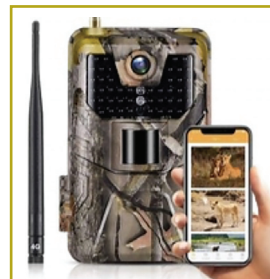
Hard wired LED security light
(try to avoid the old halogen types that use more power and the bulbs do not last very long)
Appx £30



Solar security light
Appx £30

CCTV

Where there is no power CCTV for your shed is restricted to battery type cameras often referred to as Trail / Wildlife cameras. Some of the higher end versions also have GSM facility and can send a text message to your smart device with an image of what has activated it.



Trail cameras
Appx £65
(no GSM) to £170
(GSM) Remember to factor in the cost of a memory card and possible monthly sim card fee

Shed Door Security



Coach bolts
these should be used to fix the door furniture to the shed to prevent a suspect simply unscrewing the lock and hasp from the wooden door
Appx £2 for a pack of ten



Locking bar
Help prevent the door from being forced open
Appx £30



Padlock protector
reduces the risk of the padlock being cut off.
Appx £20-25



Shed alarm If you do not have a house alarm or cannot extend it to where the shed is situated, then the battery-operated unit is a good option. Once set using the remote, the units PIR sensor detects movement and when activated has a flashing red light and emits a loud siren.

Window Security

Property of value should not be easily visible from outside of the shed. Consider fitting some net curtains to reduce the visibility from outside.



Security Bars
Shed windows are generally a single pane of glass or plastic and are easy to force. A metal grill fitted on the inside of the shed will help prevent the window being used as a point of entry.
Appx £30 per window

Securing your items

Once the physical exterior of the shed has been secured, it is just as important to secure the property within it.



A good quality ground anchor secured to the floor of the shed when used with a good quality lock and chain, will help prevent items of value being stolen. Appx £50 (for the ground anchor)



Good quality chain to be used in conjunction with the ground anchor.
Appx £50-60